



WORLDWIDE ELECTRIC MOTOR DATA SHEET

PEWWE40-18-324T



| | | | |
|-----------------------------------------|-------------------------------------------------------|--------------|-------------|
| HORSEPOWER | 40 | | |
| RPM / POLES | 1800 / 4 | | |
| VOLTAGE / PHASE | 230 / 460 V / 3 | | |
| FRAME | 324T | | |
| ENCLOSURE / DEGREE OF PROTECTION | TEFC / IP55 | | |
| FREQUENCY | 60 HZ Suitable For 50 HZ Operation With 1.0 SF | | |
| FULL LOAD SPEED | 1775 RPM | | |
| SERVICE FACTOR | 1.25 | | |
| INSULATION CLASS | F | | |
| FULL LOAD AMPS; 230 / 460 | 93.7 / 46.8 A (Usable On 208V At 104 A) | | |
| LOCKED ROTOR AMPS (STARTING); 230 / 460 | 580 / 290 A | | |
| NO LOAD CURRENT | 36.2 / 18.1 A | | |
| NEMA CODE LETTER | G | | |
| EFFICIENCY / POWER FACTOR | <u>LOAD</u> | <u>EFF.</u> | <u>P.F.</u> |
| | 100 % | 94.1% | 0.85 |
| | 75 % | 94.6% | 0.82 |
| | 50 % | 94.4% | 0.72 |
| DUTY CYCLE | S1 / Continuous | | |
| TORQUE | <u>FULL LOAD</u> | <u>LRT</u> | <u>BDT</u> |
| | 118 lb.ft. | 160% | 250% |
| SLIP | 1.40 % | | |
| NEMA DESIGN | B | | |
| MOMENT OF INERTIA | 5.74 lb.ft.² | | |
| MAX. TIME LOCKED ROTOR (Hot) | 15 Seconds | | |
| SOUND PRESSURE LEVEL | 71 dB (A) | | |
| MAX. AMBIENT TEMPERATURE | 40° C | | |
| MAX. ELEVATION | 3300 Ft. | | |
| TEMPERATURE RISE (At Full Load) | 80° C | | |
| DE BEARING | 6312 C3 | | |
| ODE BEARING | 6311 C3 | | |
| REGREASING INT. - DE BEARING | 4000 Hours | | |
| REGREASING INT. - ODE BEARING | 4000 Hours | | |
| GREASE TYPE | SKF LGHP 2 | | |
| MOUNTING | F1 (F2 Suitable) | | |
| ROTATION | Bi-Directional | | |
| SHAFT MATERIAL | 1045 Carbon Steel | | |
| INVERTER RATING | 10:1 CT / 20:1 VT PWM Type | | |
| CONNECTION DIAGRAM | 230 / 460 V - 12 Lead Δ | | |
| AREA CLASSIFICATION | Class I, Division 2, Groups A, B, C, D | | |
| APPROXIMATE WEIGHT | 513 lbs. | | |



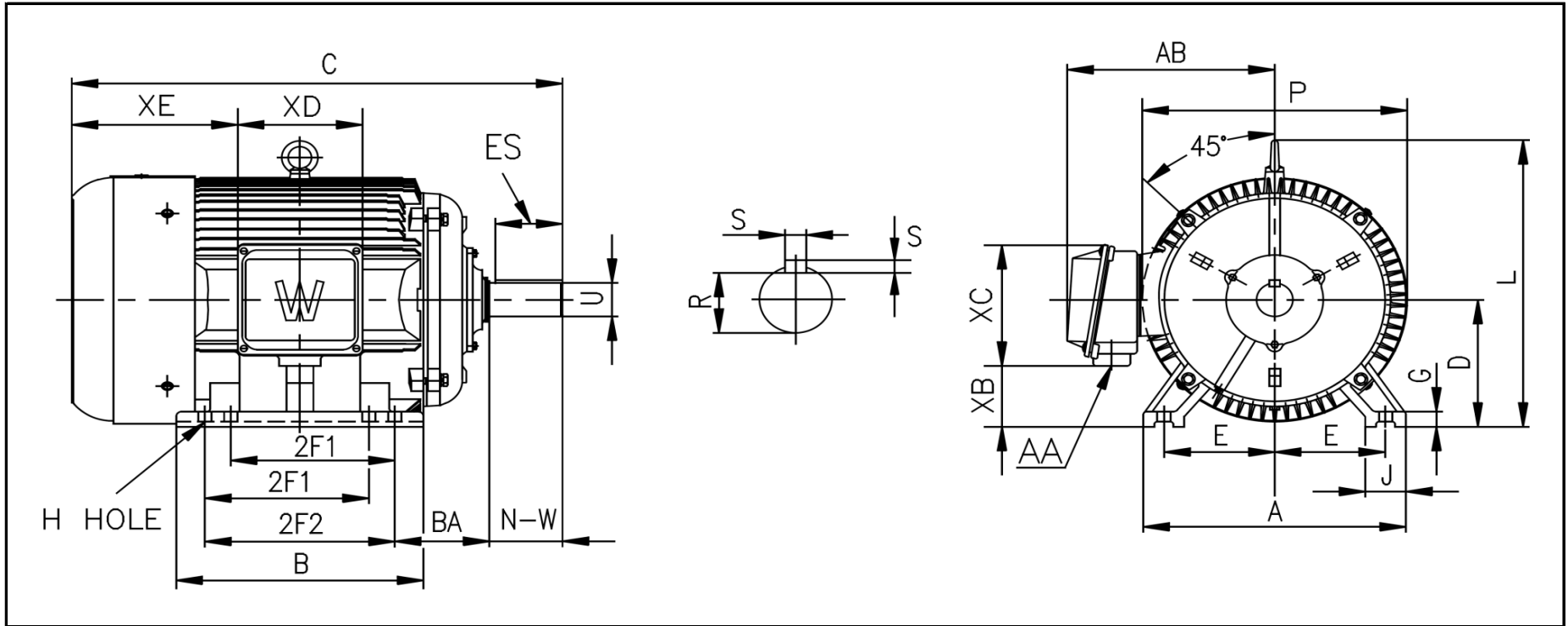
CC006A





WORLDWIDE ELECTRIC MOTOR DRAWING

PEWWE-324T



DIMENSIONS - INCHES

| MOUNTING | | | | | A | B | C | D | G | J | P | L | AB |
|----------|-----|------|------|------|----|------|------|---|------|-----|------|----|------|
| E | 2F1 | 2F2 | H | BA | | | | | | | | | |
| 6.25 | - | 10.5 | 0.66 | 5.25 | 16 | 13.5 | 29.6 | 8 | 0.99 | 2.8 | 15.7 | 16 | 14.5 |

| KEY | | KEYSET | SHAFT | | TERMINAL BOX | | | | |
|-----|------|--------|-------|-------|--------------|-----|------|----|------|
| S | ES | R | N-W | U | AA | XB | XC | XD | XE |
| 0.5 | 3.91 | 1.845 | 5.25 | 2.125 | 2 | 2.4 | 10.8 | 9 | 10.5 |

PERFORMANCE CURVES

WorldWide Electric Corporation

1 (800) 808-2131

Worldwideelectric.net

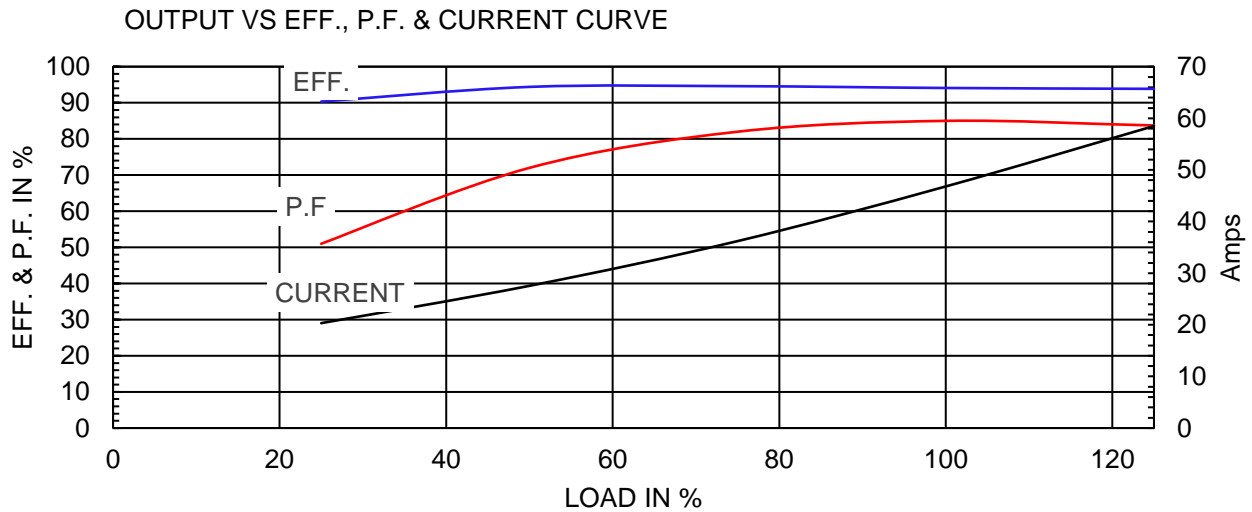
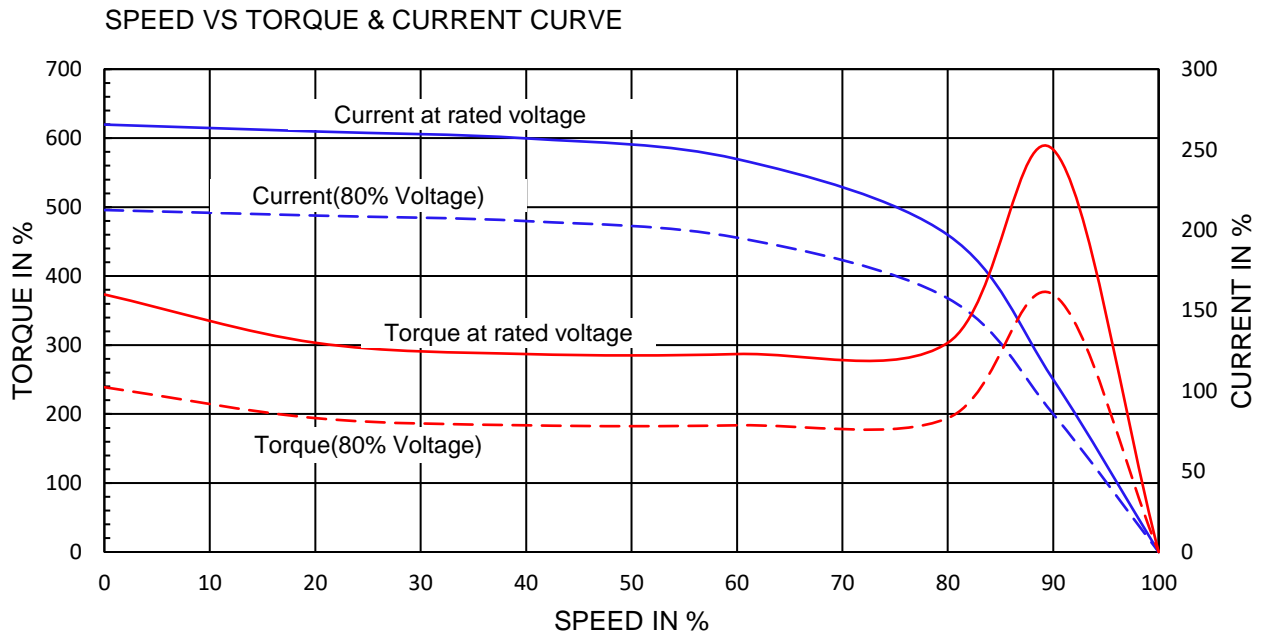


Premium Efficiency Motor:

PEWWE40-18-324T

| | | | |
|---------------------|-------------|-----------|--|
| Document Generated: | 25-Jun-2020 | Customer: | |
| Document ID: | | | |

| | | | |
|-----------------------|-------------------------|--------------|-------|
| Motor Type | PEWWE | | |
| Output Rating (HP) | 40 | FL Speed | 1775 |
| Full Load Torque | 118 lb.ft | LRT (%FLT) | 160 |
| Rotor Wk ² | 5.74 lb-ft ² | BDT (%FLT) | 250 |
| | | 460 volt FLA | 46.8 |
| | | 230 volt FLA | 93.7A |



NAMEPLATE / WIRING

WorldWide Electric Corporation

1 (800) 808-2131

Worldwideelectric.net



Premium Efficiency Motor:

PEWWE40-18-324T

Document Generated: 21-Aug-2019
Document ID:

Customer:

SAMPLE NAMEPLATE DATA

| | | | | | | | | |
|----------------------------------------------------|-----------------|-------------------------------------------------------------|--------------------------------------------------------------------|-------------------------------|-------------------|---------------------------------------------------------------------|---------------|--|
| | | PREMIUM EFFICIENCY 3-PHASE INDUCTION MOTOR | | | CC006A ISO9001 | 259277 | | |
| Model | PEWWE40-18-324T | | Ser No. | ZP | | | | |
| HP | 40 | S.F. | 1.25 | Type | | Encl | TEFC IP55 | |
| Frame | 324T | P.F. | 0.86 | Ins Cl | F | Rating | 40°C Amb Cont | |
| Voltage | 230/460 | Hz | 60Hz | Design | B | DE Brng | 6312 C3 | |
| Amps | 93.7A / 46.8A | RPM | 1775 | Code | G | ODE Brng | 6311 C3 | |
| Nom. Eff. | FL 94.1 % | 3/4 94.6 % | 230/460 V | | Date | | | |
| Usable on 208V network at | | 102 | Amps 1.0SF | Class I DIV. 2 Groups A B C D | | Amb. 40°C | T3C(160°C) | |
| 10:1 CT | | 20:1 VT | PWM VFD 1.0SF | Class I Zone 2 IIC | | Amb. 55°C | T3A(180°C) | |
| 50Hz 40 HP 200/400 V V 110 / 54.9 A 1475 rpm 1.0SF | | | | | | | | |
| WorldWide Electric Corporation | | | | | | | | |
| | | | Low Voltage ⑥ ④ ⑤ ⑦ ⑧ ⑨ ⑫ ⑩ ⑪ ① ② ③ L1 L2 L3 | | | High Voltage ④ ⑤ ⑥ ⑦ ⑧ ⑨ ⑫ ⑩ ⑪ ① ② ③ L1 L2 L3 | | |

